

PharmaJet®



User Guide

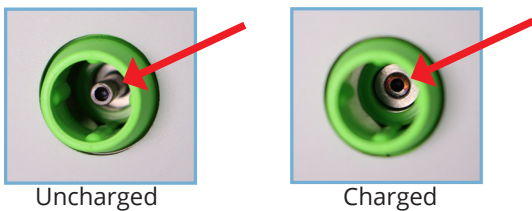
Important:

Before using your PharmaJet Tropis® Needle-Free Injection System, please read the User Guide and the Instructions for Use completely. Follow the directions carefully.

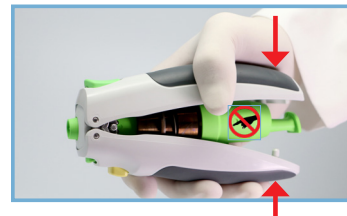
⚠ Refer to Instructions for Use to ensure safe injections and to review risks.

Step 1. Prepare the Injector

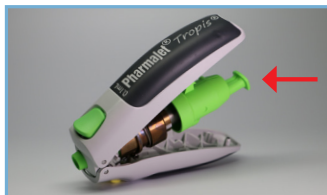
a. Verify the Injector is in the uncharged state, by confirming the Injector Hammer is visible.



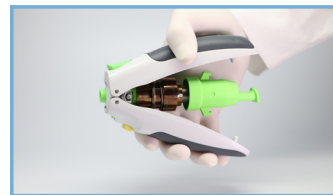
NOTE: If the Injector is in the charged state, as shown to the left, DO NOT open the Handles, proceed to **Step 2. Fill the Syringe**. If Handles are partially open, as shown below, DO NOT touch internal components, close the Handles and proceed to **Step 2. Fill the Syringe**.



b. When the Injector is in the uncharged state, as shown above, open the Handles to prepare the Injector. Press the rear Injector Latch Button to allow the Injector Handles to open freely.



c. With the Injector Handles fully open, squeeze the Handles until they close and are locked in place. Once the Injector Handles are closed, ensure the Injector Hammer is retracted, indicating the Injector is charged.



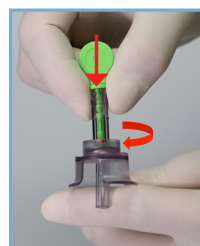
Handles Fully Open

Handles Locked in Place

Step 2. Fill the Syringe



a. Remove the green protective cap from the Syringe.



b. Place the Syringe into the top of the Filling Adapter. Push down and twist to the right to lock the Syringe into place.



c. Remove the protective sleeve from the spike. Insert the Filling Adapter spike into the vial with a twisting motion until it is fully seated.



d. Invert the Adapter/Syringe assembly. Pull down the Plunger to draw fluid into the Syringe. Remove bubbles as required.

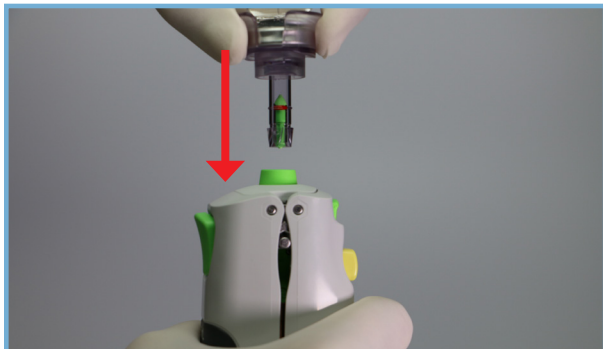


e. Complete filling by aligning the red rubber ring with the fill line.

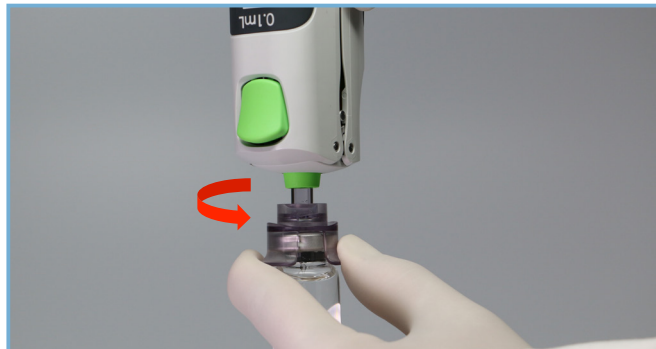


f. Snap off the end of the Plunger protruding from the Syringe at the neck and discard.

Step 3. Load the Injector



a. Insert the Syringe and Vial Assembly into the Inner Core Housing of the charged Injector until it “clicks” into place.



b. Reinvert the assembly and remove the Filling Adapter and vial from the Syringe by twisting to the left.

NOTE: If injection is not to be given immediately, replace protective Syringe Cap.

Step 4. Give the Injection

NOTE: If needed, remove protective Syringe Cap.



a. With a forefinger, depress and hold the yellow Injector Safety Button. This allows the Inner Core Housing to retract freely.

Deltoid Injection



b. While holding the Safety Button, gently press the Syringe perpendicular to the injection site until the Inner Core Housing retracts. Once the Inner Core Housing is retracted, it is not necessary to hold the Safety Button, as long as you keep pressure on the patient and the Inner Core Housing remains retracted.

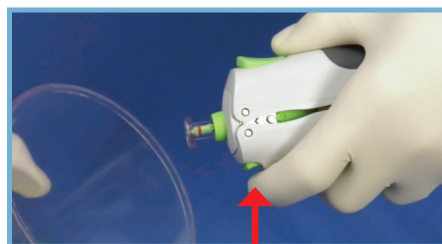
Lateral Thigh Injection



c. To inject, depress the Activation Button with the thumb. Upon injection, a “click” will be heard and the Syringe Plunger will advance forward.



d. Immediately following injection, apply light pressure to the injection site with cotton or gauze and then apply an adhesive bandage.



e. Remove the Syringe from the Injector by pressing the green Eject button and dispose the Syringe in accordance with local requirements.