

PharmaJet®



Injector-0.1mL



Syringe-0.1mL
Needle-free



Filling Adapter

User Guide

Important:

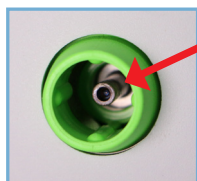
Before you use your PharmaJet Tropis Needle-free Injection device, please read this User Guide and the Instructions For Use completely. Follow the directions carefully when using the Tropis device.



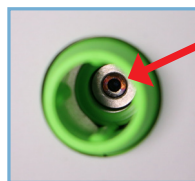
Refer to Instructions for Use to ensure safe injections and to review risks.

1. Prepare the Injector

a. Verify the Injector is in the uncharged state, by confirming the Injector Hammer is visible.

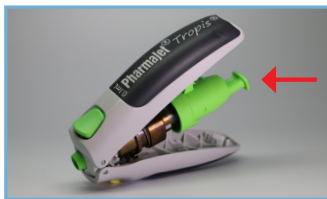


Uncharged

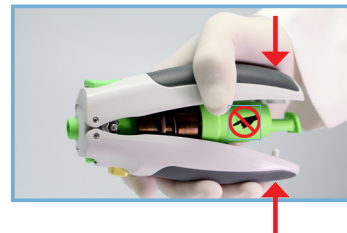


Charged

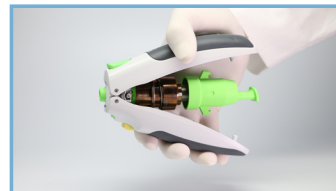
b. When the Injector is in the uncharged state, as shown above, open the Handles to prepare the Injector. Press the rear Injector Latch Button to allow the Injector Handles to open freely.



NOTE: If the Injector is in the charged state, as shown to the left, DO NOT open the Handles, proceed to **Section 2. Fill Syringe**. If Handles are partially open, as shown below, DO NOT touch internal components, close the Handles and proceed to **Section 2. Fill Syringe**.



c. With the Injector Handles fully open, squeeze the Handles until they close and are locked in place. Once the Injector Handles are closed, ensure the Injector Hammer is retracted indicating the Injector is charged.

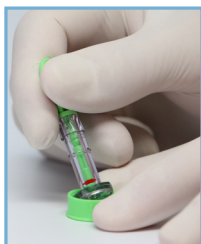


Handles Fully Open

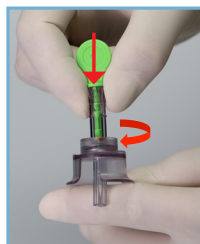


Handles Locked in Place

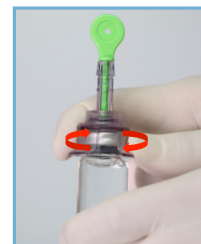
2. Fill Syringe



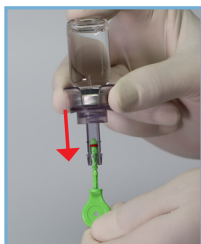
a. Remove the green protective cap from the Syringe.



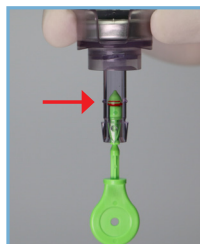
b. Place Syringe into top of Filling Adapter. Push down and twist to lock Syringe into place.



c. Remove protective sleeve from the spike. Insert the Filling Adapter spike into the vial with a twisting motion until it is fully seated.



d. Invert the Adapter/Syringe assembly. Pull down Plunger to draw fluid into Syringe. Remove bubbles as required.

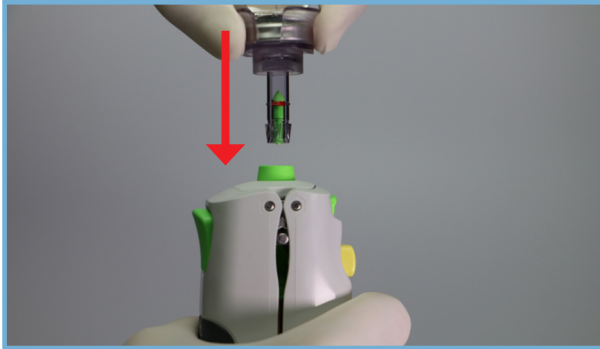


e. Complete filling by aligning red rubber ring with the fill line.

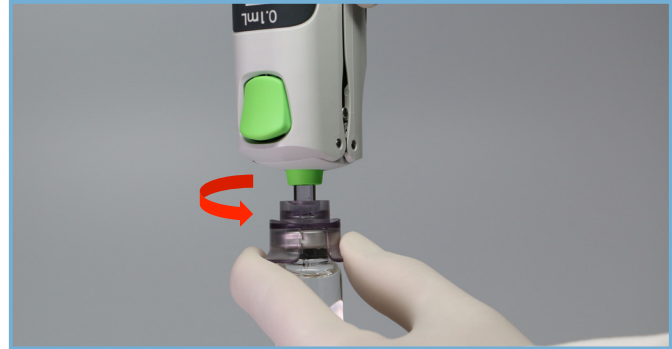


f. Snap off end of Plunger protruding from Syringe at neck and discard.

3. Load Injector



a. Insert the Syringe and Vial Assembly into the Inner Core Housing of the charged Injector until it “clicks” into place.



b. Reinvert the assembly and remove the Filling Adapter and vial from Syringe using a counterclockwise turn.

4. Give Injection

NOTE: If needed, remove protective Syringe Cap.

Deltoid Injection



a. With forefinger, depress and hold the Injector Safety Button. This allows the Inner Core Housing to retract freely.



b. While holding the Safety Button, press the Syringe perpendicular to the injection site. Once the Inner Core Housing is retracted, it is not necessary to hold the Safety Button as long as you keep pressure on the patient and the Inner Core Housing remains retracted.

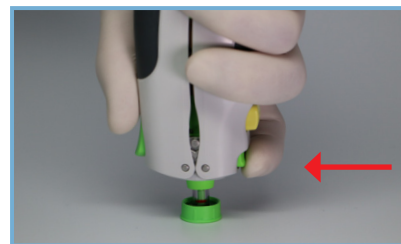
Lateral Thigh Injection



To inject, depress Activation Button with thumb. A “click” will be heard upon injection.



c. Immediately following injection, apply pressure to injection site with cotton or gauze for 60 seconds and then apply an adhesive bandage.



d. Remove Syringe from the Injector by pressing the Eject button, and dispose of Syringe in accordance with local requirements.